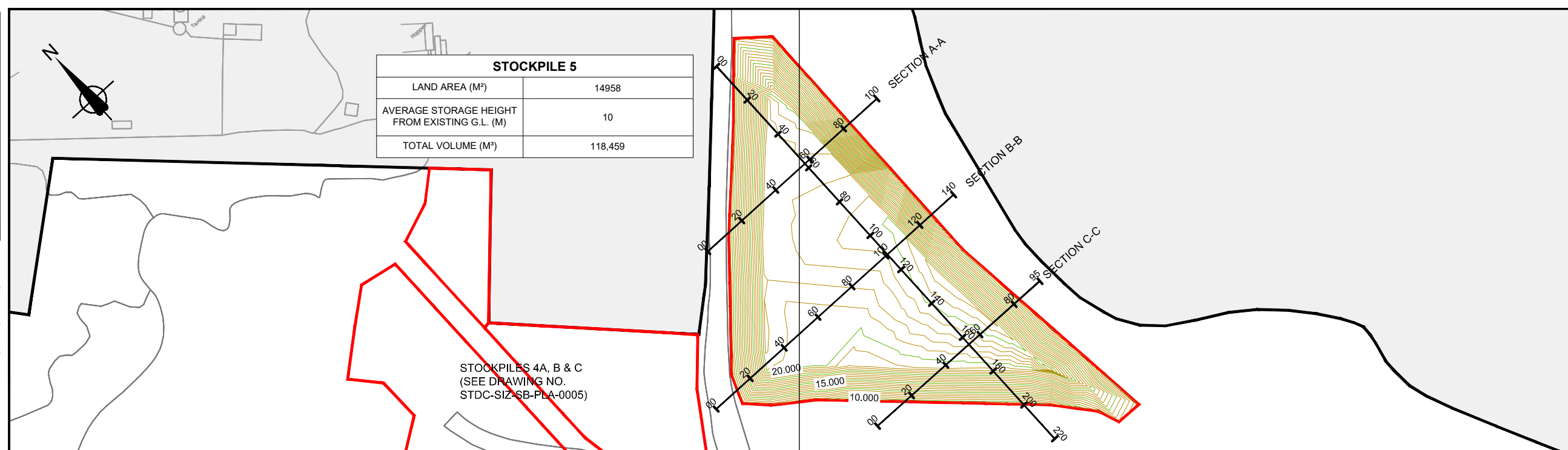


DO NOT SCALE

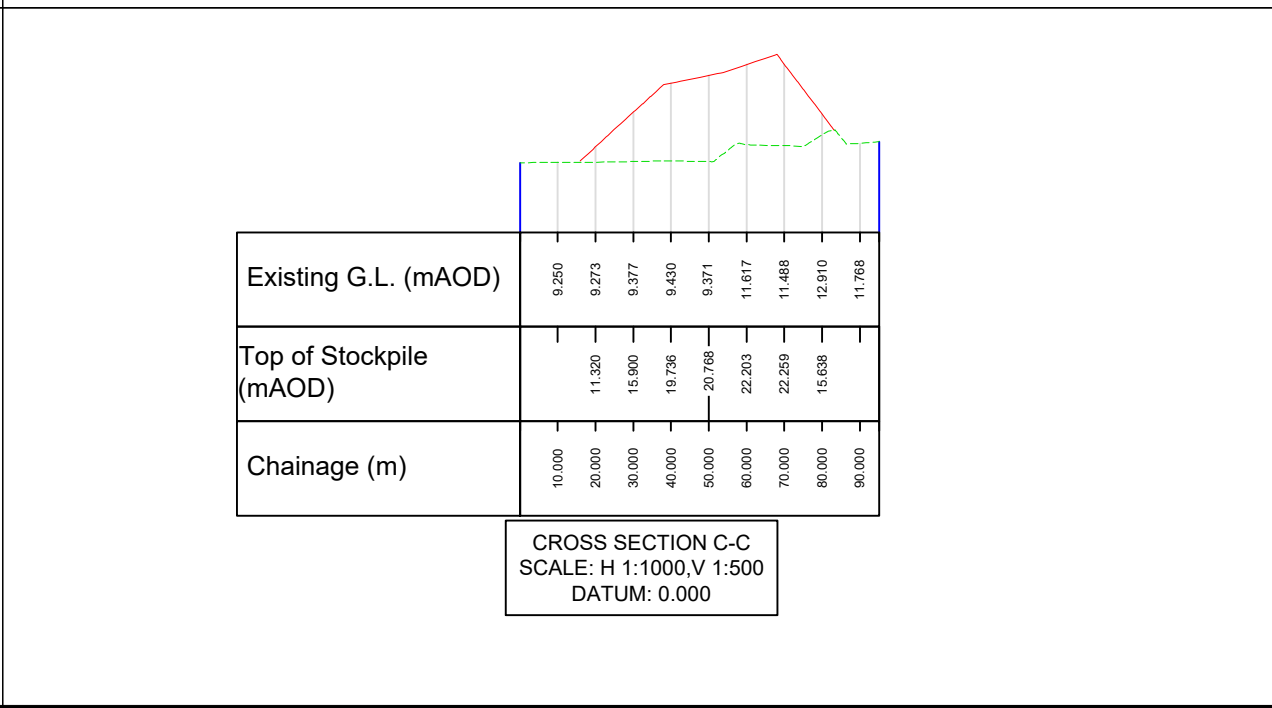
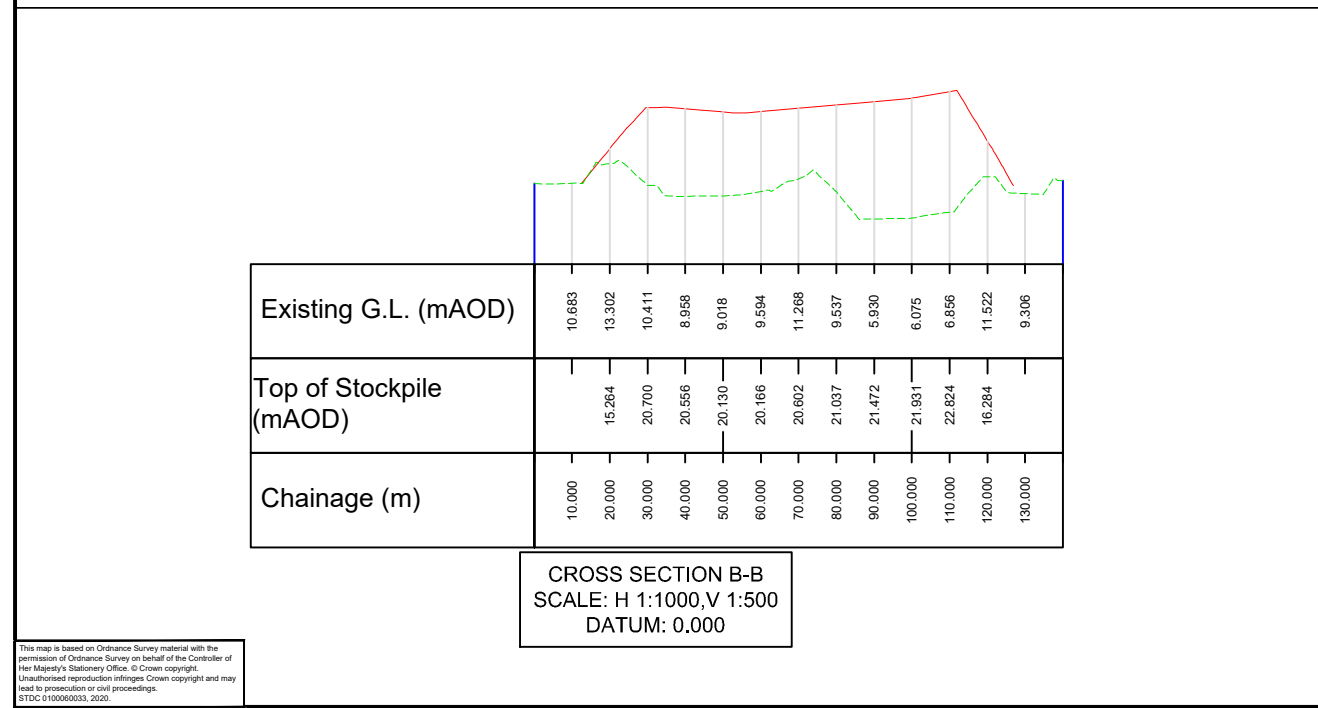
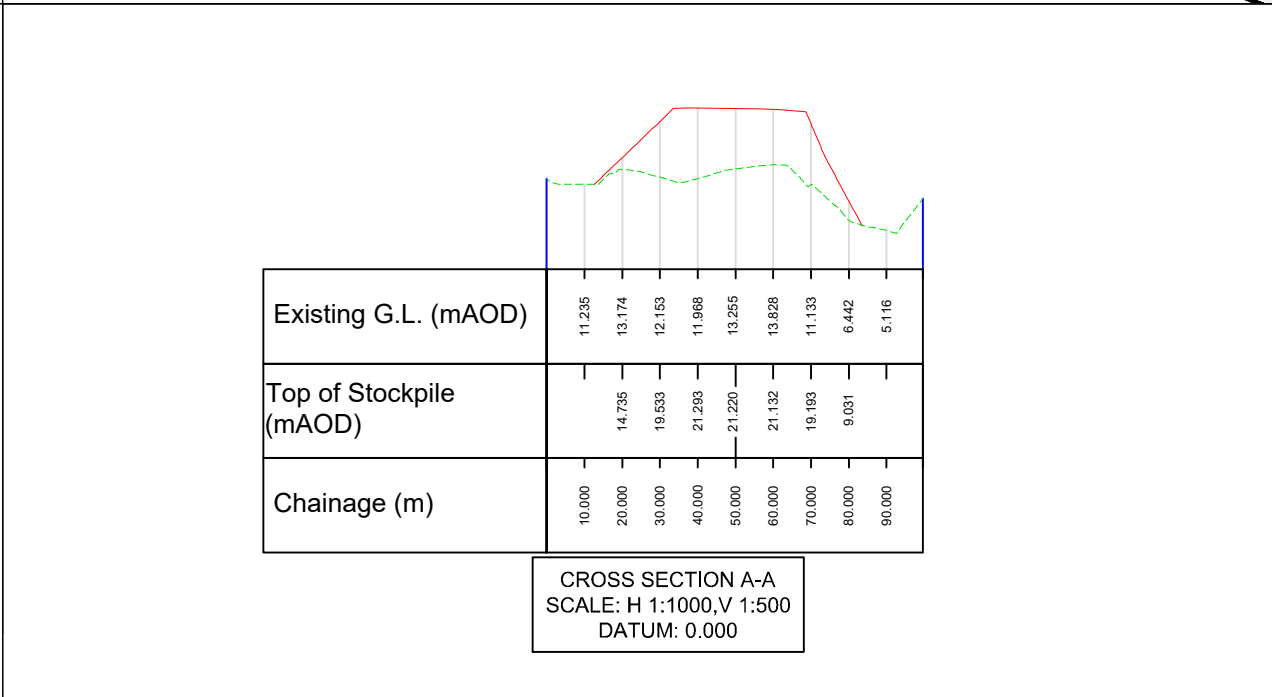
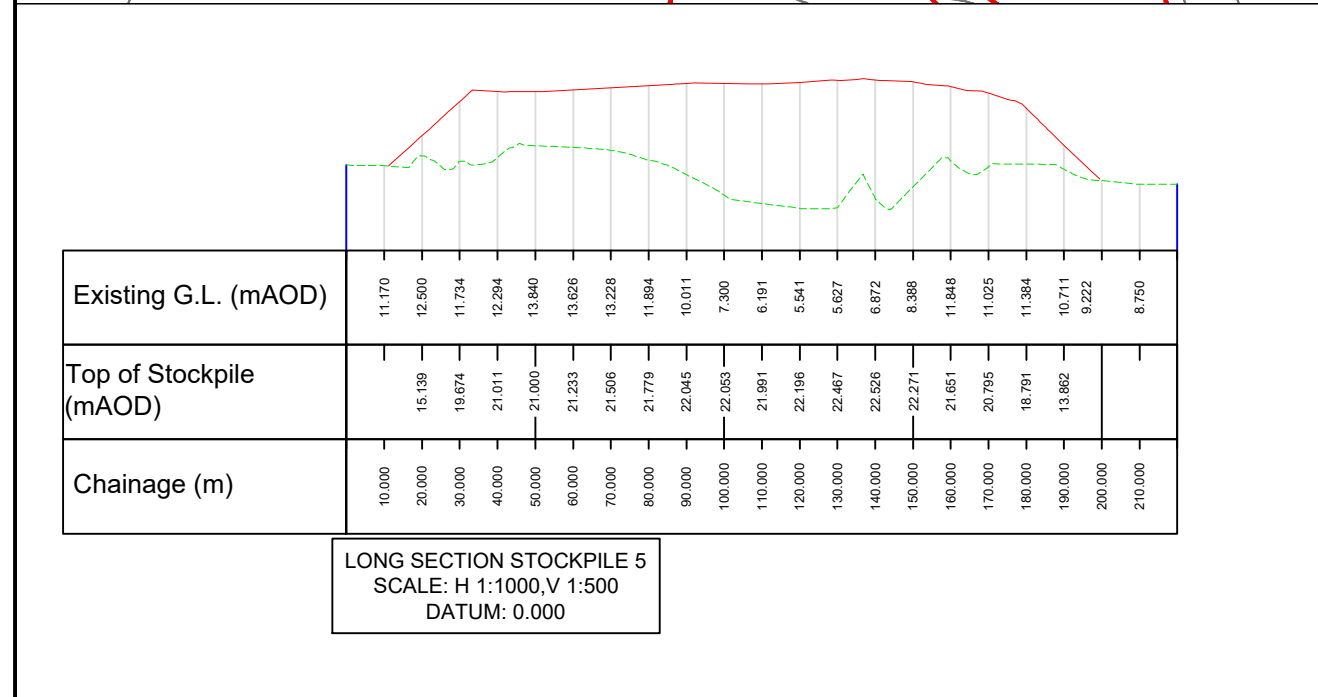
Millimetres
0 10 100

STOCKPILE 5	
LAND AREA (M ²)	14958
AVERAGE STORAGE HEIGHT FROM EXISTING G.L. (M)	10
TOTAL VOLUME (M ³)	118,459



- NOTES**
- Do not scale from this drawing
 - Existing levels shown are given in metres AOD
 - This drawing is to be read in conjunction with the following planning application drawings:
 - STDC-SCW-XX-PLA-0001-2
 - STDC-NEZ-WA-PLA-0001-6
 - STDC-SIZ-GP-PLA-0001-7
 - STDC-SIZ-LA-PLA-0001
 - STDC-SIZ-MR-PLA-0001-4
 - STDC-SIZ-SB-PLA-0001-6

- KEY**
- Proposed stockpile locations
 - Major contours (2.5m intervals)
 - Minor contours (0.5m intervals)



FOR PLANNING

Rev.	Date	Description	By	Chk'd	App'd

STDC
Teesside Management Offices,
Redcar, TS10 5QW
www.southteesdc.com



Project Title: **TEESWORKS**
The UK's largest industrial zone

Drawing Name: **SOUTH BANK PROPOSED MATERIAL STORAGE STOCKPILE 5 DETAILS & SECTIONS**

Drawn by: LCD Date: DEC 20
Checked by: DE Date: DEC 20
Approved by: JMC Date: DEC 20

Drawing Number: STDC-SIZ-SB-PLA-0006 Revision: -

Drawing Scale: 1:2,000/ AS STATED Page Size: A3

This map is based on Ordnance Survey material with the permission of Ordnance Survey on behalf of the Controller of Her Majesty's Stationery Office. © Crown copyright. Unauthorised reproduction infringes Crown copyright and may lead to prosecution or civil proceedings. STDC 010006003, 2020